

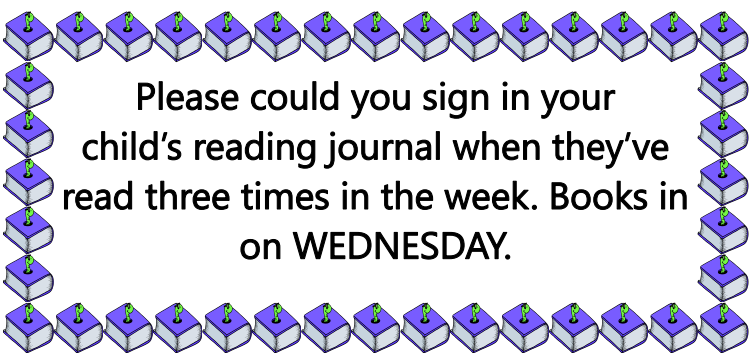


This week, we started work on our topic—"Walk on the Wildside." The children were challenged to think about why the fragile environment of the rainforest is worth protecting and why we need to learn about it.

The children learnt about each of the layers of the rainforest and got creative in making dioramas of these.

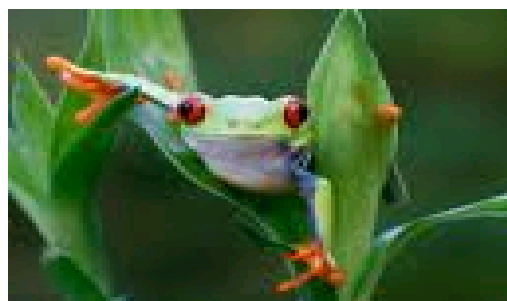
**WISLEY TRIP**

Remember to bring a packed lunch, waterproof coat and wear school uniform on Monday for our day out. We will be leaving just after 9 and returning in time for the end of the school day.



Please could you sign in your child's reading journal when they've read three times in the week. Books in on WEDNESDAY.

# Just to let you know...



We have spent time this week developing a set of values for our classes. Each child has signed and agreed to do their best to live up to them.

HOMEWORK ACTIVITIES

Please decorate reading journals and complete layers of the rainforest work over the weekend.

Spellings to learn are:

Observation	observant	observance	
Expectant	expectation	substantial	substance
Assistant	attendant	attendance	nuisance

Dear Parents,  
 Bikeability forms need to be returned as soon as possible if you would like your child to take part.  
 Please use Parent Pay for Preston Montford trip deposits and payments.  
 Have a great weekend!  
 Best wishes  
 Sarah, Alison, Mary and Bec

In maths this week, the children have worked really hard to extend their knowledge of place value. See if they can tell you what they know

Tth Th H T U . Tenths hundredths

Ask what each digit in a number is worth. Also we have covered rules for rounding—try some at home. (5136 to the nearest 100, 32.8 to the nearest whole number etc)

Remember to make use of My maths. The login is *pewley* and the password is *squared*