

HOMWORK ACTIVITIES

This week's spelling pattern is adding a suffix to words and we would like the children to investigate two more suffixes at home (ed, ing, ly).

We have also set another mathletics activity related to perimeter—please encourage your child to complete it as it really consolidates their learning from the week!

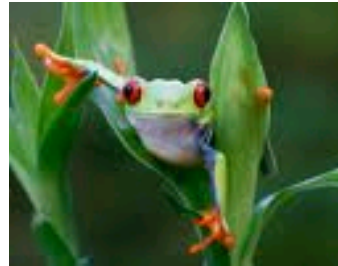
Any unfinished topic work will be sent home to finish.

Just to let you know...

BIKEABILITY GROUP

3

Starts Monday!



The children have worked up an appetite generating ideas for their Amazon menus. Within this they tried to include descriptive vocabulary including alliteration, similes and onomatopoeia. We will begin designing these next week so start thinking of some **WOW**

HARVEST

Next Friday at 11am years 5 and 6 will be celebrating Harvest festival in the Chapel. This year we are collecting food for Guildford Action as well as money for the on going Syrian appeal. Parents are very welcome to join us for the service.

<http://www.surreycommunity.info/guildfordaction/>

MATHS

TOPIC

Next week we will be looking at deforestation of the Rainforest. Any research they could do at home would really help them with this area of the topic! Check out this website and search for Amazon:

<http://news.bbc.co.uk/cbbcnews/>

Best wishes

Clare, Mary, Sarah, Cheryl and Helen

In maths this week, the children have been calculating perimeter and improving our mental maths strategies. We have had fun investigating perimeters of compound shapes and creating some of our own! We also worked on converting between units of measure (cm-mm, m-km). Try some at home!

We have added another activity on Mathletics for the children to attempt.