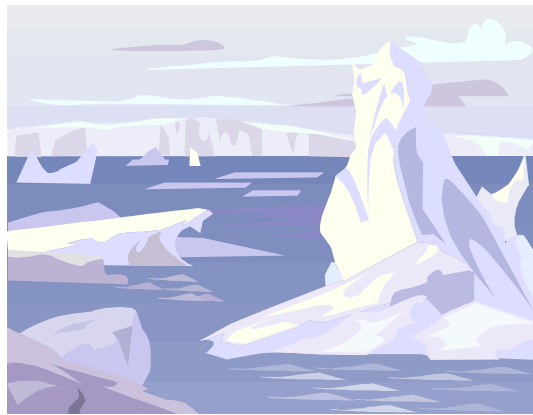


## Year 6 Group Room

---

What must it be like to be at the South Pole? We can only imagine and this the children used their imaginations themselves to carry out a writing task. We learnt how useful the thesaurus on Word is in helping us find interesting words.



There are no spellings to learn next week as we'd like the children to spend a bit more time reading. Ask them to try and find 'connectives' in what they're reading, e.g. soon, since, first, later, after, however, although. This will reinforce what they're learning about connectives in their writing.

Have a great weekend!

Lynn and Tina 😊